

## HANGING TYPE MOTORS SERIES F 80 NEW - FV 80 PLUS (FOR GOLDSMITH)



**item: 233/00 - F80 NEW**

Ideal for goldsmith or light workings; 110 W; 8000 r.p.m.

**item: 234/00 - F80 NEW KIT**

Complete with electronic rheostat (art. 358/00V), flexible shaft and handpiece with four collets: 0/1/2,35/3 mm (art. 150/00).

**item: 235/00 - F80 NEW KIT**

Complete with electronic rheostat (art. 358/00V), flexible shaft and handpiece with four collets: 0/1/2,35/3 mm (art. 151/00).

**item: 240/00 - FV80 PLUS**

Complete of cable for goldsmith working, upgraded; 130 W; 10.000 r.p.m.

**item: 241/00 - FV80 PLUS KIT**

Complete with electronic rheostat (art. 358/00V) and flexible shaft (art. 110/00).

**item: 242/00 - FV80 PLUS KIT**

Complete with electronic rheostat (art. 358/00V) and flexible shaft (art. 111/00).

## HANGING TYPE MOTORS SERIES M.I. (FOR INDUSTRY)



**item: 280/00 - M.I. 12**

Industrial motor 150 W – 12.000 r.p.m. with 1 cable.

**item: 281/00 - M.I. 12 KIT**

M.I. 12 motor complete with electronic rheostat (art. 358/00V), flexible shaft and handpiece with four collets: 0/1/2,35/3 mm (art. 174/00).

**item: 290/00 - M.I. 20**

Industrial for die-sinker 180 W – 20.000 r.p.m. with 1 cable.

**item: 291/00 - M.I. 20 KIT**

M.I. 20 motor complete with electronic rheostat (art. 358/00), flexible shaft and handpiece with four collets: 0/1/2,35/3 mm (art. 174/00).

## HANGING TYPE MOTORS SERIES M.O.



**item: 250/00 - M.O. 15**

High speed motor, for dental laboratory; 150 W; 15.000 r.p.m.; with 1 cable.

**item: 251/00 - M.O. 15 KIT**

M.O. 15 motor complete with electronic rheostat (art. 358/00) and flexible shaft (art. 120/00).

**item: 252/00 - M.O. 15 KIT**

M.O. 15 motor complete with electronic rheostat (art. 358/00) and flexible shaft (art. 121/00).

**item: 260/00 - M.O. 18**

High speed, 180 W; 18.000 r.p.m.; with 1 cable.

**item: 261/00 - M.O. 18 KIT**

M.O. 18 motor complete with electronic rheostat (art. 358/00) and flexible shaft (art. 120/00).

**item: 262/00 - M.O. 18 KIT**

M.O. 18 motor complete with electronic rheostat (art. 358/00) and flexible shaft (art.121/00).

**item: 270/00 - M.O. 25**

High speed, 180 W; 25.000 r.p.m.; with 1 cable.

**item: 271/00 - M.O. 25 KIT**

M.O. 25 motor complete with electronic rheostat (art. 358/00) and flexible shaft (art.130/00).

**item: 272/00 KIT**

M.O. 25 motor complete with electronic rheostat (art. 358/00) and flexible shaft (art.131/00).

## HANGING TYPE MOTORS SERIES M.O. WITH FARO gear type connection



**item: 275/00 - M.O. 25**

Complete with Faro gear type connection; 180W; 25.000 r.p.m.

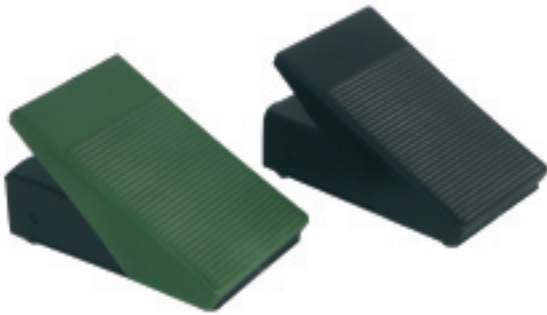
**item: 276/00 - M.O. 25 KIT**

M.O. 25 motor complete with electronic rheostat (art. 358/00) and flexible shaft gear type (art. 136/00).

## MOTORS ACCESSORIES

**item: 358/00**

Footprint electronic rheostat with double cable.



**item: 358/00V**

Footprint electronic rheostat with double cable for series F80 NEW and FV80 PLUS motor.

**item: 358/28**

Protection for electronic rheostat.



**item: 371/00**

Hand speed regulator for hanging motor.



**item: 380/00**

Bench type support, screw fixing.



**item: 390/00**

Bench type support, clamp fixing.

## LABORATORY FLEXIBLE SHAFTS WITH BEARINGS

**item: 110/00 - TML PLASTIC**

TML light duty type (4 mm core) with plastic sheathing and Marelli connection.



**item: 111/00 - TML METAL**

TML light duty type (4 mm core) with metallic sheathing and Marelli connection.



**item: 120/00 - S-TML PLASTIC**

S-TML heavy duty type (4 mm strengt. core) with plastic sheathing and Marelli connection.



**item: 121/00 - S-TML METAL**

S-TML heavy duty type (4 mm. strengt. core) with metal sheathing and Marelli connection.



**item: 130/00 - TML-52 PLASTIC**

TML-52 heavy duty type (5 mm. strengt. core) with plastic sheathing and Marelli connection.



**item: 131/00 - TML-52 METALL**

TML-52 heavy duty type (5 mm. strengt. core) with metallic sheathing and Marelli connection.



**item: 132/00 - TML-52 CASALI PLASTIC**

TML-52 (5 mm strengthened core) with plastic sheathing and Casali connection.



**item: 133/00 - TML-52 CASALI METAL**

TML-52 (5 mm strengthened core) with metallic sheathing and Casali connection.



**item: 136/00 - TML-52 FARO METAL**

TML-52 (5 mm strengthened core) with metallic sheathing and Faro gear-type connection.

## FLEXIBLE SHAFTS WITH HAND-PIECES



**item: 150/00 - TML-O PLASTIC**

Flexible shaft TML-O light duty type, for goldsmith, with built-in hand-piece, 4 collets (mm 0/1/2,3/3) with plastic sheathing and Marelli connection.



**item: 151/00 - TML-O METAL**

Flexible shaft TML-O light duty type, for goldsmith, with built-in hand-piece, 4 collets (mm 0/1/2,3/3) with metal sheathing and Marelli connection.



**item: 152/00 - S/TML-O PLASTIC**

Flexible shaft S-TML-O heavy duty type, for goldsmith, with built-in hand-piece, 4 collets (mm 0/1/2,3/3) with plastic sheathing and Marelli connection.



**item: 153/00 - S/TML-O METAL**

Flexible shaft S-TML-O heavy duty type, for goldsmith, with built-in hand-piece, 4 collets (mm 0/1/2,3/3) with metal sheathing and Marelli connection.



**item: 003/R7 - Spare hand-piece**

**item: 47/F - foot switch**

**item: 33B - Collet ø 0 mm**

**item: 34B - Collet ø 1,0 mm**

**item: 57D - Collet ø 1,5 mm**

**item: 58D - Collet ø 2,0 mm**

**item: 35B - Collet ø 2,3 mm**

**item: 32B - Collet ø 3,0 mm**

**item: 170/00 - I/TML-52 PLASTIC**

Flexible shaft I-TML-52 with built-in hand-piece, four collets (mm 2,3-3-4-6) for M.O. series dental laboratory motors with plastic sheathing.



**item: 171/00 - I/TML-52 METAL**

Flexible shaft I-TML-52 with built-in hand-piece, four collets (mm 2,3-3-4-6) for M.O. series dental laboratory motors with metallic sheathing.



**item: 174/00 - I/TML-52 PLASTIC M.I.**

Flexible shaft I-TML-52 with built-in hand-piece, four collets (mm 2,3-3-4-6) for M.I. series industrial motors with metallic sheathing.



**item: 30B - Collet ø 2,35 mm**

**item: 29B - Collet ø 3,00 mm**

**item: 28B - Collet ø 4,00 mm**

**item: 23B - Collet ø 6,00 mm**

## HAND-PIECES



**item: 140/00**

Bayonet-joint hand-piece complete with four collets (mm 0/1/2,35/3).



**item: 141/00 - SILVER**

High precision hand-piece with bayonet joint.



**item: 141/23** - Collet  $\varnothing$  1,00 mm

**item: 141/22** - Collet  $\varnothing$  2,35 mm

**item: 141/24** - Collet  $\varnothing$  3,00 mm



**item: 180/00 - T30**

Laboratory hand-piece complete with 2,35 mm collet.



**item: 001/R2** - Collet  $\varnothing$  2,35 mm



**item: 181/00 - T30**

Laboratory hand-piece complete with 3 mm. collet.



**item: 001/R6** - Collet  $\varnothing$  3,00 mm



**item: 160/00**

Bayonet-joint industrial hand piece complete with four collets: 2,35/3/4/6 mm.



**item: 165/00**

Bayonet-joint industrial hand-piece with 0 to 4 mm spindle.



**item: 190/00**

Hammering hand-piece bayonet-joint type complete with 2 points.

## HAND-PIECES WITH AMERICAN FOREDOM CONNECTION



**item: 142/00**

Bayonet-joint hand-piece complete with four collets (mm. 0/1/2,35/3) and American Foredom connection.



**item: 143/00**

Bayonet-joint hand-piece complete with four collets (mm. 0/1/2,35/3) and American Foredom connection with duplex spring connection.



**item: 161/00**

Bayonet-joint industrial hand piece complete with four collets: 2,35/3/4/6 mm. and American Foredom connection.



**item: 162/00**

Bayonet-joint industrial hand piece complete with four collets: 2,35/3/4/6 mm. and American Foredom connection with duplex spring connection.



**item: 167/00**

Bayonet-joint industrial hand-piece with 0 to 4 spindle and American Foredom connection.



**item: 168/00**

Bayonet-joint industrial hand-piece with 0 to 4 spindle and American Foredom connection with duplex spring connection.



**item: 182/00**

Laboratory hand-piece complete with 2,35 mm. and American Foredom connection.



**item: 183/00**

Laboratory hand-piece complete with 2,35 mm. and American Foredom connection with duplex spring connection.



**item: 191/00**

Hammering hand-piece bayonet-joint type and American Foredom connection.



**item: 192/00**

Hammering hand-piece bayonet-joint type and American Foredom connection with duplex spring connection.