



ESS-250KE Line

Manual door steam sterilizers



STERILIZATION



ESS-250KE Line

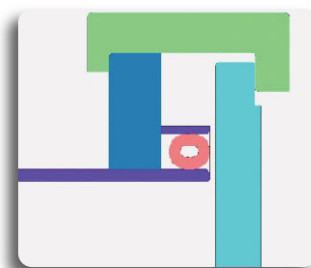
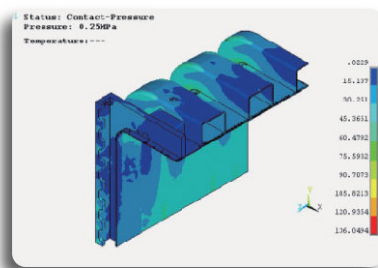
Manual door Steam Sterilizers

- 304 SS square chamber
- Manual opening door
- LCD display with touch screen function
- Built-in thermal printer
- Vacuum function with built-in vacuum pump
- External air compressor
- 11 pre-set programs (including B&D and test vacuum)
+ 9 open programs
- Memory 20000 cycles



Main Features

- **Pulse Vacuum Sterilizer (Standard)**
ESS-250KE series are a high temperature sterilizer which is researched and developed according to the latest requirements of medical institution and CSSD. It is designed and manufactured by referring to latest relative state standards to meet all sterilizing requirements and CSSD. The design of chamber accords with state GB 1502011, GB8599-2008 and European EN285 standard.
- **Strict and standard manufacture process for product main body.**
ESS-250KE pulse vacuum sterilizer is welded by welding robot to guarantee the normalization and uniformity of the main body manufacture.
- **No welding part on chamber wall.**
ESS-250KE pulse vacuum sterilizer has none welding part or bolt in the chamber which effectively protects parcels to be sterilized. The chamber silicon rubber pad which is used to protect the chamber inner wall extends service life.
- **Reliable and durable main body.**
The main body of ESS-250KE pulse vacuum sterilizer is designed according to professional analytical method. The modern high-emulation software ANSYS is used for main body model simulation design.
Design service life: 10 years (or 20000 times sterilization).
- **Reasonable sealing structure.**
ESS-250KE pulse vacuum sterilizer adopts durable circular hollow sealing ring which is driven by compressed air.
- **Intelligent pressure controller between the chamber and jacket.**
ESS-250KE pulse vacuum sterilizer adopts pressure controller to guarantee steam pressure and quality.
- **Unique vacuum noise-reduction device.**
ESS-250KE series sterilizer equipped with LNS low-noise and water-saving vacuum system to reduce the operation noise.
- **Humanized operation system**
To meet user's need on unloading side, ESS-250KE pulse vacuum sterilizer adopts double-screen structure. Both loading and unloading sides have a screen to display sterilizer running status and alarming information.
- **Reasonable pipeline layout that realizes single-side repair.**
ESS-250KE pulse vacuum sterilizer pipeline realizes single-side repair so the sterilizer can be installed against the wall. Also two sterilizers can use same repair space to save installation space.
- **Multiple sterilizing programs.**
Compare with traditional sterilizer, ESS-250KE series sterilizer equipped with functions of steam pressure detector and steam saturation measurement. Also the sterilizer has multiple sterilizing and testing programs such as PCD, rapid, rubber and custom, etc...



S.S. health-class pipe imported pneumatic valve



Vacuum pump



Loading by basket



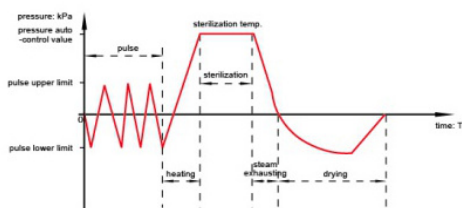
Loading by sterile box

Technical Features

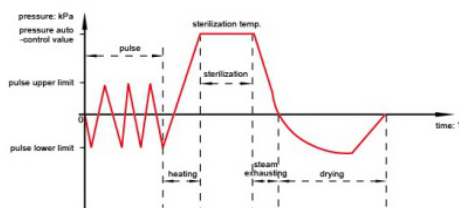
• Scientific parameters, wide scope of application

| | Chamber | Jacket |
|---|-------------|---------|
| Designed pressure | -0,1/0,3MPa | 0,3MPa |
| Designed temperature | 144°C | 144°C |
| Working pressure | 0,25MPa | 0,25MPa |
| Working temperature | 139°C | 139°C |
| Opening pressure of safety valve | 0,28 | 0,28 |

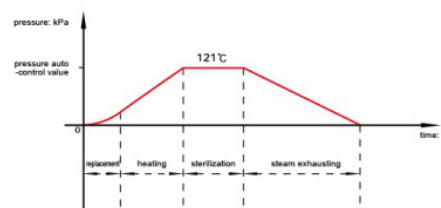
• Standard Cycles



Vacuum program
For dressing instrument, aseptic clothes, utensils

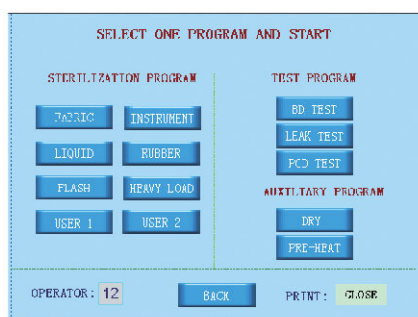


B-D Test program

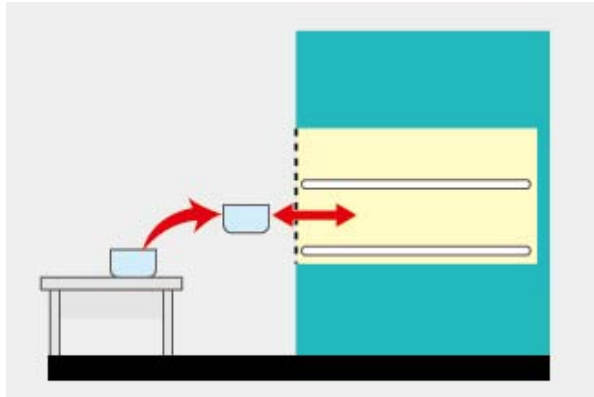


Liquid program
For less liquid items

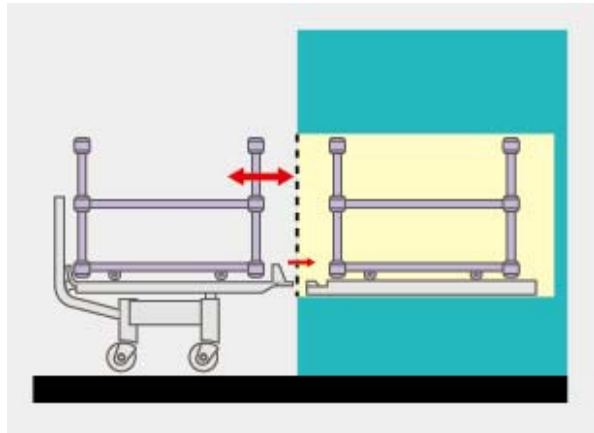
• Interface



- Loading method



Loading shelf



Loading trolley



| Cod. | ESS-250KE/140 | ESS-250KE/240 | ESS-250KE/350 | ESS-250KE/650 |
|--------------------|--|------------------|------------------|------------------|
| Volume | 146 L | 241 L | 352 L | 655 L |
| Net weight | 525 kg | 660 kg | 880 kg | 1270 kg |
| Control power | 220/0.5 V/Kw | 220/0.5 V/Kw | 220/0.5 V/Kw | 220/0.5 V/Kw |
| Motive power | 380/16.5 V/Kw | 380/21.5 V/Kw | 380/21.5 V/Kw | 380/42.5 V/Kw |
| Chamber dim. WxHxD | 420x420x830mm | 600x600x670mm | 600x600x980mm | 610x910x1180mm |
| Overall dim. WxHxD | 880x1730x1166mm | 1286x1848x1000mm | 1286x1848x1310mm | 1286x1980x1522mm |
| Loading | Loading shelf | Loading shelf | Loading shelf | Loading trolley |
| Standard | Single door, built-in electric steam generator | | | |
| Optional | External softener | | | |