



ESC1200

5 i hca UjW7\ Ya Ji a JbYgWbWY
=a a i bcbUggUm5 bUmYf



LABORATORY



ESC1200

5i hca UhjW7\Ya Ji a JbYgWbW' =a a i bcbUggUm5bU'mmYf



Cod. ES7%&\$\$



Main Parameters

- Principle: Magnetic microbeads CLIA
- Throughput: 120 T/H
- Time to first result: < 15 min
- Sample tube size: 75mm/100mm
- Auto re-test: available
- Internal master curve, 2-point/6-point calibration
- Barcode scanning to identify and locate reagent/sample

Advanced Detection Principle

CLIA(Magnetic solid phase separation)- Combination of magnetic solid phase technology and Chemiluminescence technology. Wider linear range, higher sensitivity and test speed. fully meet the clinical need

High Throughput, Short Assay Time

120 T/H. time to first result: 15minutes

Specially Designed Probe

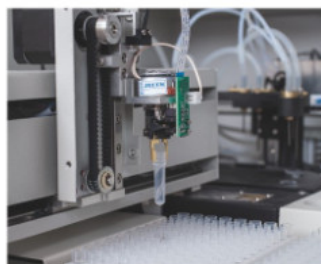
Sidewall opening of the probe ensures the solid phase completely separate from the free phase

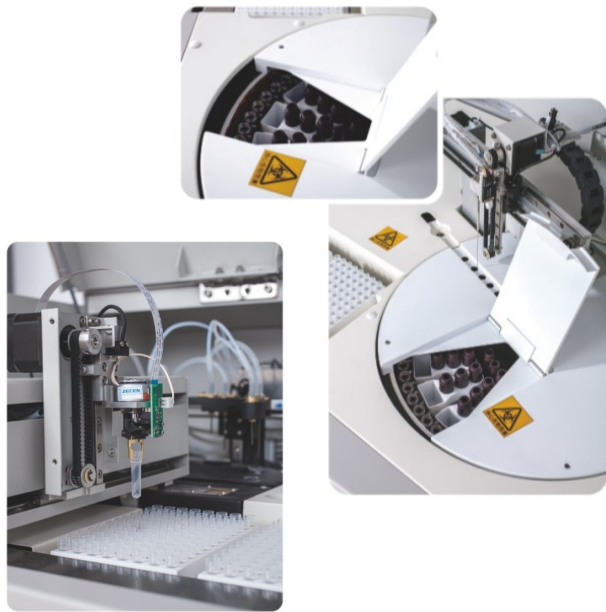
Flexible Detection Mode

One- step, two step can be truly achieved, ensure the accuracy of the results

Stream lined Operating System

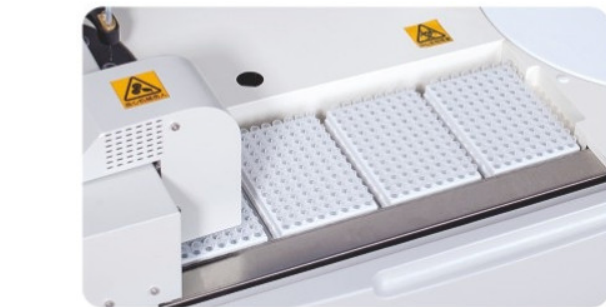
User-friendly Interface, simple and convenient
 Intelligent Calibration&OC
 LIS connection
 Data editing, storage, query and printing





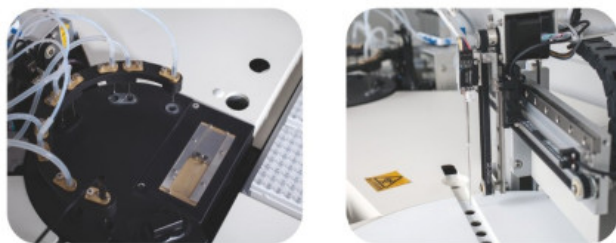
Flexible Sample/Reagent Tray

- Flexible Sample/Reagent Tray
- Patented Sample/Reagent tray, simple mechanism. low failure rate
- Sample positions : 60, continuous loading
- Reagent positions: 20, Max 20 items can be tested one time
- Barcode scanning to identify the location of sample/reagent, avoid human error
- Reagent storage and expiration reminder, avoid waste
- Auto mixing for the magnetic beads reagent
- Refrigerated function, ensure best condition of sample/reagent STAT



4-hour Unattended Reaction tubes Loading Area

- Three-dimensional movement for mechanical finger, intelligent and efficient
- Move, load and discard the reaction tubes automatically
- Reaction tubes: 384 pos, extendable
- 4-hour unattended operation



High Precision Probe

- Sampling path moves in straight line, no throwing off
- Teflon coating, waterfall cleaning, low carry-over
- Anti-collision, clot detection, liquid detection



Precise Temp-control Incubation

- Tray/Complete Separation Cleaning Tray
- Incubation tray: $37 \pm 0.1^\circ \text{C}$, ensure complete reaction
- Cleaning tray: 4-step auto cleaning, completely separate the solid phase from the free phase

Innovative FITC- Separation Technology by Magnetic Beads Binding with Anti- FITC

- Tubular chemiluminescence technology, Flexible
- Antibody and antigen reacts in liquid status, full time and complete reaction
- Only 5 minutes for magnetic beads involved in the reaction, avoid the non-specific adsorption
- Superparamagnetic beads, solid phase easily separates from free phase
- Strict process control, small intra- batch differences



Innovative AP-APLS Chemiluminescence Technology

- High sensitivity, no less than 10⁻² per unit
- Innovative APLS substrate, fast reach plateau period
- Long plateau period, stable signal, easy detection
- Monocomponent non- oxidizing substrate, easy operation. long validity

Thyroid

- Tt3
- FT3
- TT4
- FT4
- TSH
- TGAb
- TPOAb
- TG



Inflammation Monitoring

- PCT
- CRP



Fertility

- E2
- PROG
- TESTO
- PRL
- FSH
- LH
- Total-hCGB
- F-hCGB
- fE3



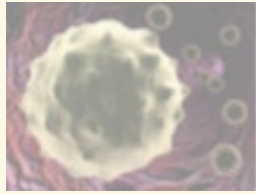
Cardiac

- cTnl
- HFABP
- HCY
- NT- proBNP
- D-Dimer



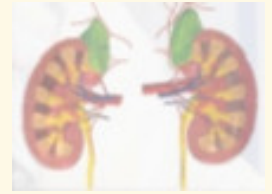
Tumor Markers

- AFP
- CEA
- FTN
- CA125
- CA15-3
- CA19-9
- CA50
- PSA
- FPSA
- SCC
- NSE
- HE4
- S100
- CA72- 4
- CA242
- CYFRA21-1



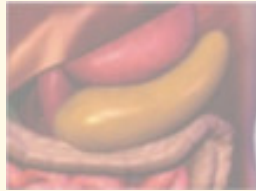
Kidney Function

- B2-MG
- Cys-C
- RBP
- NGAL



Glycometabolism & Hypophyseal Hormone

- C-P
- INS
- hGH



TORCH

- TOXO IgG
- TOXO IgM
- RV IgG
- RV IgM
- CMV IgG
- CMV IgM
- HSV- 1 IgG
- HSV-1 IgM
- HSV- 2 1gG
- HSV- 2 1gM



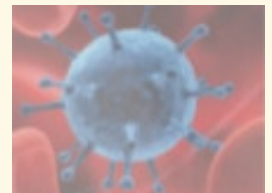
Hepatic Fibrosis

- III NP
- CIV
- LN
- HA



Infectious

- HBsAg
- HBsAb
- HBeAg
- HBeAb
- HBcAb
- Anti-HCV
- Anti-HIV
- Anti- TP



Bone Metabolism

- 25-OH-Vit-D
- BGP
- iPTH



Gastric Mucosa Function

- PG I
- PG II

