



ES-9A!, \$\$\$ /
ES-9A!, , \$\$
)!dUfh8 jZ
< Ya Utc`c[m5 bUmYfg



LABORATORY

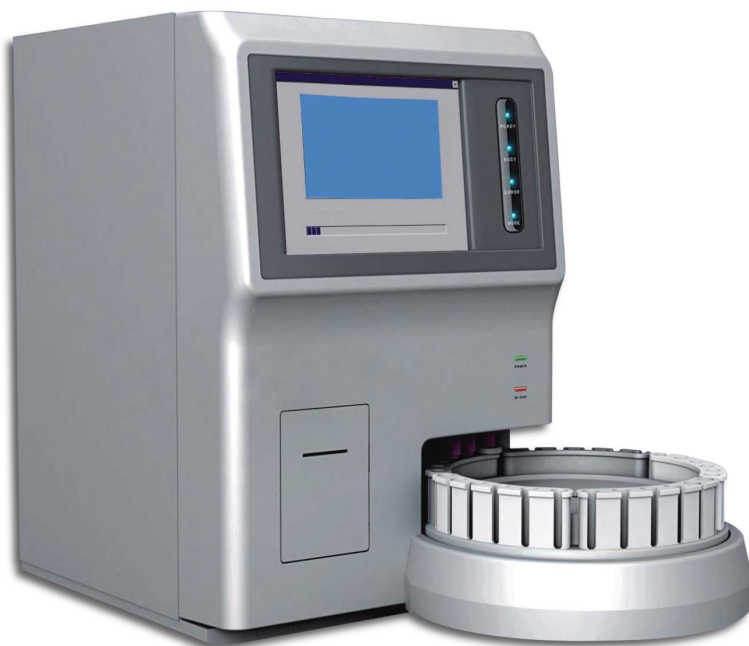


ES!< 9A!, \$\$\$ / , , \$\$\$

5-part Diff Hematology Analyzers



Cod. **ES-HEM-8000**



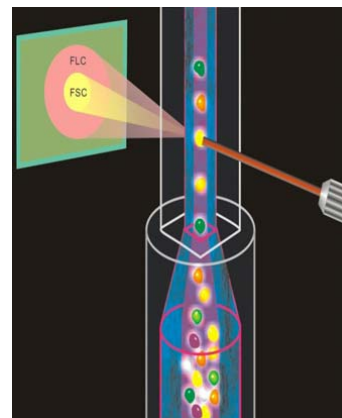
Cod. **ES-HEM-8800**

Multi-angle Laser Scattering Principle

On classify of leukocyte adopt for semiconductor laser flow cell technology to process the numeration of leukocyte and classification.

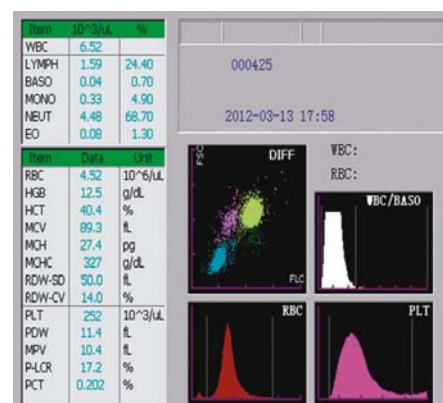
Semiconductor laser irradiate on the cell through from processed by the sheath flow technology, which can be identified the cell classification on basic of each cell generated the second signal.

Forward Minor angle scatter signal can react cell size; Forward Large angle scatter signal can react the inclusion information of cell particle and nucleus.



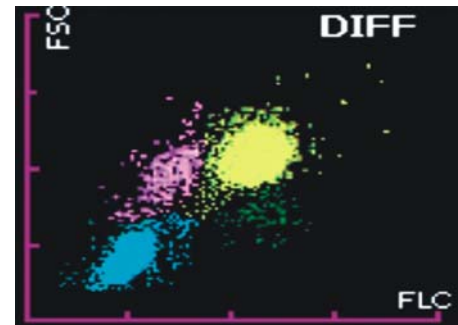
Performance Characteristic

- Large-screen color TFT touch screen
- Dual-channel WBC five-part diff along with screening function out of abnormal cell
- For volume metering, which adopts two technology of floater metering and time monitor, to be sure the accuracy of measurement and calculation.
- 28 parameters, including one scattergram, three histogram
- Standard auto loader, automatic sampling machine with highly automaticity
- Auto mixing and cap piercing, decrease the risk of infection, to protect the operation security. (only for ES-HEM-8800)
- Built-in barcode reader, large collection for amount of information; fast input speed (only for ES-HEM-8800)



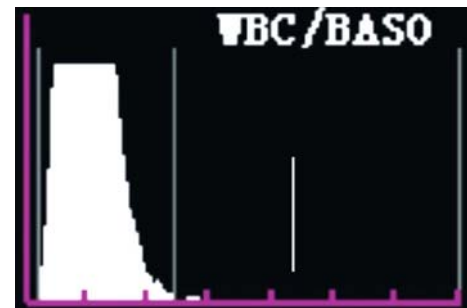
DIFF Laser Channel

On the DIFF laser channel, hemolysin dissolve RBC and PLT, through the detection of semiconductor laser flow scattering technology, lymphocytes, monocytes and eosinophils along with neutrophils will be completely distinguished, meanwhile screening abnormal lymphocytes and immense immature cell, and display on the DIFF scattergram.



WBC/BASO Channel

In the independent WBC/BASO channel, under the customized hemolytic effect, to get the precise result of BASO, and obtain the total amount of basophils and WBC, meanwhile effectively ruled out the other factors for counting interference such hard-to-dissolve cell, giant platelets, platelet clumping and other non cellular particles etc.



Multiple Sample Mode for ES-HEM-8000 only

Sample close whole blood, Capillary blood, can be re-measurement again according to the situation.



Standard Auto Loader for ES-HEM-8800 only

Auto loader with 30 samples capacity, highly automaticity, Auto mixing and cap piercing to avoid biohazard.



Technical Features

	ES-HEM-8000	ES-HEM-8800
Principle	Multi-angle laser scattering for WBC(DIFF), Impedance resistance for WBC(BASO), RBC PLT, Cyanide-free photometry for hemoglobin	Multi-angle laser scattering for WBC(DIFF), Impedance resistance for WBC(BASO), RBC, PLT, Cyanide-free photometry for hemoglobin
Parameter	28 parameters, one scattergram, three histograms	28 parameters, one scattergram, three histograms
Sample volume	40µl	40µl
Testing mode for option	sample close whole blood, Capillary blood	sample close whole blood, manual open (whole blood, Capillary)
Throughput	60 samples / hour	60 samples / hour
Display	10.4 inch color TFT touch screen	10.4 inch color TFT touch screen
Operation interface	English version, user-defined report	English version, user-defined report
Barcode scanning	/	Built-in barcode scanner
Data Storage	With a storage capacity of 35,000 patient's result (including scattergrams and histogram)	With a storage capacity of 35,000 patient's result (including scattergrams and histogram)
Main Machine Size	403x460x571mm	533x684x571mm
Auto Loader Size	/	350x350mm
Weight	30KG	42KG
Power Supply	220V, 50HZ (optional of wide power supply)	220V, 50HZ (optional of wide power supply)

Optional Accessories

External barcode reader

Reagents

• Diluent

• Lyse (D)

• Lyse (B)

• Cleaner