



ES-DPX4

Digital dental x-ray
panoramic unit



With Ceph

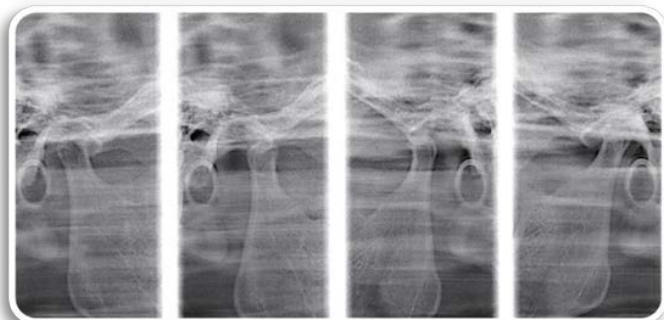


DENTISTRY



ES-DPX4

Digital dental x-ray panoramic unit



Model	ES-DPX4
Type	Oral high frequency panoramic X-ray machine
Anode voltage	60-88 kV
Hi VV current	Panoramic photography 4~10mA G_i ~~~d\ chc[fUd\ nf7Yd\ t15mA
Rectification mode	High frequency DC 60~80 kHz
Power Supply	AC220V/110V 50/60Hz 2.5kVA
X-ray tube	Toshiba D-054SB
Detector parameters	Physical resolution: 5580 (H) x 256(V) panoramic mode Pixel size: 27µm x 27µm Physical resolution: 8160 pixel
Electric motor	High precision steps two phases
Software control system	Panoramic image workstation
Focal spot size	0.5mm x 0.5mm
Total filtration	≥ 2.5mmAl
Magnification	1.25 - 1.30
Panoramic photography	Adult / child Adult panoramic 15 seconds Children's panoramic 12 seconds
Exposure time	CEPH 4 - 8 seconds Temporomandibular joint 3x4 seconds
Temporomandibular joint photography	Quad mode
Lifting method	Automatic
Dimensions	1880 x 881 x 2045 mm
Weight	180 kg - G.W. 230 kg



ESSE3 srl, Via Garibaldi 30
14022 Castelnuovo D.B. (AT)
Tel +39 011 99 27 706
Fax +39 011 99 27 506
e-mail: esse3@chierinet.it
web: www.esse3.dreamgest.com

